

# 2018 KS2 School Dashboard for governors & school leaders

Produce custom dashboards at [www.ftaspire.org](http://www.ftaspire.org)

## St. Michael's Academy

LA Somerset DFE 9332319 Produced September 2018 Version 1

### What it is

Seven easy-to-use reports which help governors and school leaders to evaluate school performance using the latest 2017 DFE school performance indicators.

### What it tells you

- What are the strengths and areas for improvement in your school?
- How does attainment and pupil progress compare to the national average?
- How are you performing in different subjects?
- Do you have any under-performing groups of pupils?
- How might the context of your school affect performance?
- How does pupil attendance compare to the national average?

### About the data shown

1 2 3

#### Actual results

Actual results for your school, using a range of measures such as averages and thresholds.



#### Gauges

These display headline indicators and whether actual results and pupils' progress are in line with, or significantly above or below, the national average.

ESTIMATED



1 2 3

#### Pupil progress

The value added progress that your pupils have made from one key stage to the next. FFT compares your actual results to the estimated results based on the progress of similar pupils nationally.



#### Statistical significance

Green plus signs and red minus signs highlight where either actual results or pupils' progress is significantly above or below the national average.



#### Trends

The dashboard analyses school performance over 3-5 years. Any significant year-on-year improvement is highlighted using an up arrow. Significant declines in performance are highlighted with a down arrow.



#### Strengths & weaknesses

These highlight key pupil groups and subjects where progress is above or below the national average.

### Working in partnership with



### Data sources

Generated from FFT Aspire which includes data sourced from the DfE (National Pupil Database) and data calculated by FFT. FFT is accredited as a DfE supplier to receive early access to ASP data. Headline performance indicators will be consistent with the DfE School Performance Tables and ASP.

# Overview

## KS2 Attainment 2018 · Actual results

60 pupils

## KS2 Progress 2018 · Value Added

55 matched pupils

Average Scaled Score (Re, Ma)

% Expected standard+ (Re, Wr, Ma)

Average Scaled Score (Re, Ma)

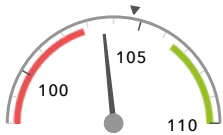
% Expected standard+ (Re, Wr, Ma)

103.6 ↑

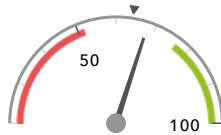
68% ↑

-0.7 ↑

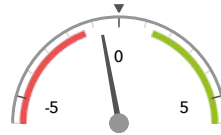
+6%



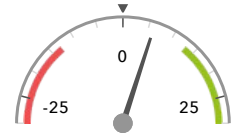
In line with the national average (104.7) ◀



In line with the national average (64%) ◀



In line with the national average (0) ◀



In line with the national average (0%) ◀

## KS2 higher and lower performing pupil groups 2018

	Higher performing	Lower performing
Overall achievement pupil progress	First language not English (8) Not FSM (ever) (26) ↑ Not FSM (in last 6 years) (26) ↑	SEN Support (10) ⬇️ FSM (ever) (29) ⬇️ FSM (in last 6 years) (29) ⬇️
KS2 reading achievement pupil progress	Not FSM (ever) (26) ↑ Not FSM (in last 6 years) (26) ↑ First language not English (8)	SEN Support (10) ⬇️ ↑ FSM (17) ⬇️ FSM (ever) (29) ⬇️ ↑
KS2 writing achievement pupil progress	First language not English (8) Female (24) No SEN (43)	SEN Support (10) Male (31) Higher attainers (17)
KS2 mathematics achievement pupil progress	First language not English (8) ⬆️ Not FSM (ever) (26) ⬆️ ↑ Not FSM (in last 6 years) (26) ⬆️ ↑	SEN Support (10) ⬇️ FSM (17) FSM (ever) (29) ⬇️
KS2 grammar, punctuation & spelling achievement pupil progress	First language not English (8)	SEN Support (10) ⬇️ FSM (ever) (29) ⬇️ FSM (in last 6 years) (29) ⬇️

# Attainment & progress

## KS2 Attainment 2018

60 pupils

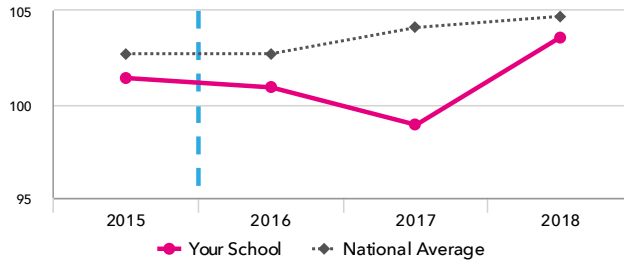
Average Scaled Score (Re, Ma)

103.6 ↑

FFT Rank



In line with the national average (104.7)



## KS2 Progress 2018

55 matched pupils

Average Scaled Score (Re, Ma)

-0.7 ↑

FFT Rank



In line with the national average (0)

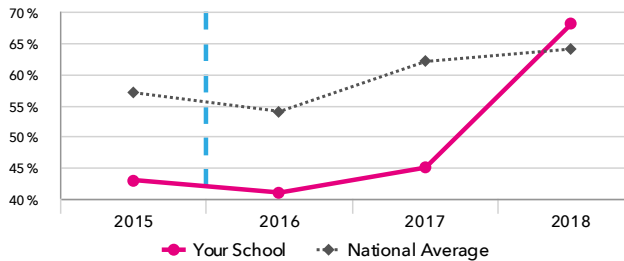
% Expected standard+ (Re, Wr, Ma)

+6%

FFT Rank



In line with the national average (0%)



% Expected standard+ (Re, Wr, Ma)

68% ↑

FFT Rank



In line with the national average (64%)

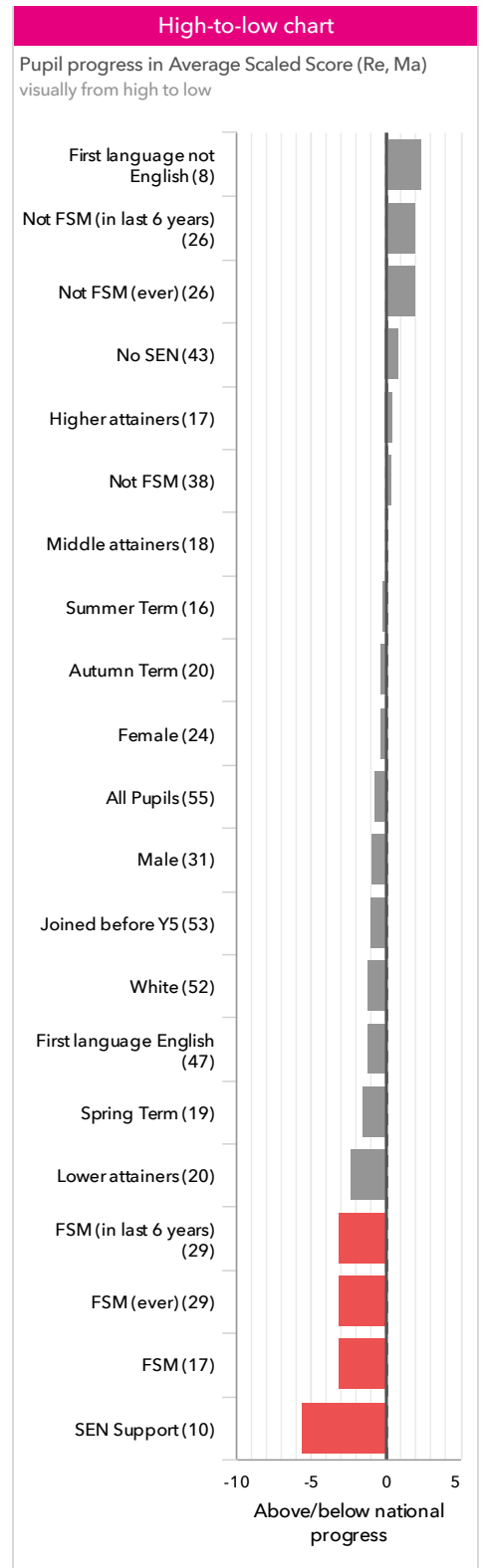
## KS2 performance summary

	Actual results			Pupil progress		
	2016	2017	2018	2016	2017	2018
Number of Pupils / % Matched	59	62	60	86%	90%	92%
% Expected standard+ (Re, Wr, Ma)	41% ↓	45% ↓	68% ↑	-12%	-11%	+6%
% Higher standard (Re, Wr, Ma)	3%	3%	8%	-3%	-5%	-0%
Average Scaled Score (Re, GPS, Ma)	101.5	99.5 ↓	103.7 ↑	-1.8 ↓	-3.6 ↓	-0.8 ↑
Average Scaled Score (Re, Ma)	100.9 ↓	98.9 ↓	103.6 ↑	-2.0 ↓	-3.7 ↓	-0.7 ↑
% Expected standard+ Reading	54%	48% ↓	73% ↑	-10%	-19% ↓	+1% ↑
% Higher standard Reading	8% ↓	6% ↓	17%	-12% ↓	-17% ↓	-8%
Scaled Score Reading	101.1	97.9 ↓	103.3 ↑	-1.9 ↓	-5.3 ↓	-1.6 ↑
% Expected standard+ Writing	75%	68%	78%	+2%	-4%	+3%
% Higher standard Writing	12%	5% ↓	10%	-3%	-12% ↓	-8%
Scaled Score Writing	100.9	99.6	101.0	+0.3	-0.9	-0.5
% Expected standard+ Maths	59%	66%	78%	-8%	-4%	+5%
% Higher standard Maths	8%	13%	28% ↑	-10%	-7%	+5%
Scaled Score Maths	101.0 ↓	100.6 ↓	104.4 ↑	-2.2 ↓	-2.1 ↓	+0.4 ↑
% Expected standard+ Grammar, Punctuation & Spelling	69%	50% ↓	77% ↑	-1%	-23% ↓	+3% ↑
% Higher standard Grammar, Punctuation & Spelling	19%	15% ↓	20% ↓	-5%	-15% ↓	-14% ↓
Scaled Score Grammar, Punctuation & Spelling	103.4	99.9 ↓	103.8 ↑	-1.1	-4.8 ↓	-2.3 ↓
% Expected standard+ Science	83%	60% ↓	78% ↑	-	-	-
Average Point Score (Re, Wr, Ma)	-	-	-	-	-	-
% Level 4+ (Re, Wr, Ma)	-	-	-	-	-	-
% Level 4B+ (Re, Wr, Ma)	-	-	-	-	-	-
% Level 5+ (Re, Wr, Ma)	-	-	-	-	-	-

# Pupil groups

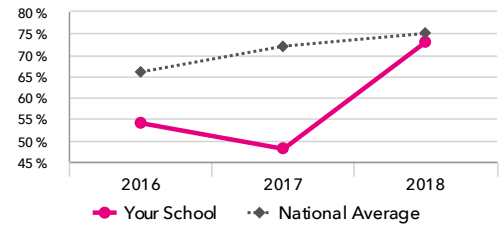
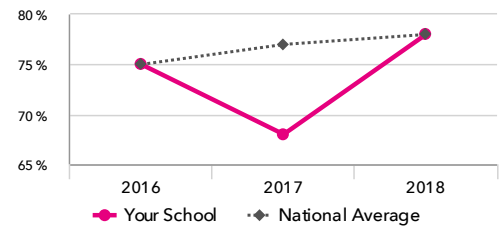
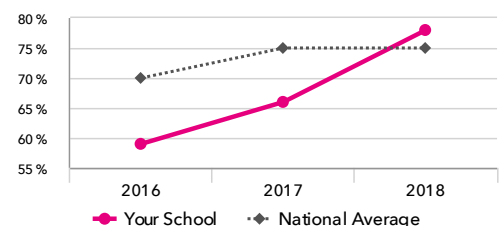
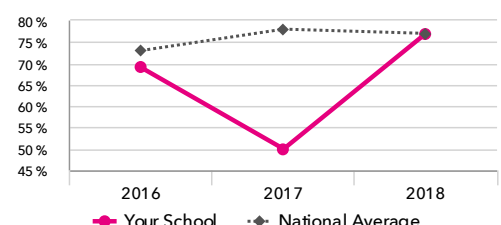
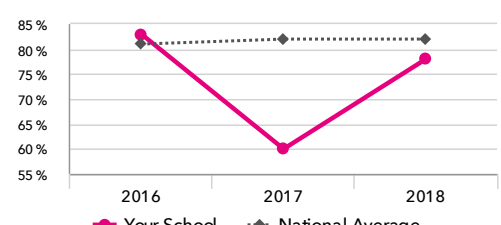
## KS2 Pupil groups performance 2018

		Pupils	Actual results			Pupil progress		
			Average Scaled Score (Re, Ma)	% Expected standard + (Re, Wr, Ma)	% Higher standard (Re, Wr, Ma)	Average Scaled Score (Re, Ma)	% Expected standard + (Re, Wr, Ma)	% Higher standard (Re, Wr, Ma)
Summary	<a href="#">All Pupils &gt;</a>	60	103.6 ↑	68% ↑	8%	-0.7 ↑	+6%	-0%
Gender	<a href="#">Male &gt;</a>	31	103.5 ↑	67% ↑	10%	-0.9	+5%	-1%
	<a href="#">Female &gt;</a>	29	103.7	69%	7%	-0.3 ↑	+9%	+1%
Prior Attainment	<a href="#">Higher attainers &gt;</a>	17	110.7 ↑	100%	29%	+0.5 ↑	+5%	+2%
	<a href="#">Middle attainers &gt;</a>	18	104.8 ↑	78%	0%	+0.0 ↑	+6%	-3%
	<a href="#">Lower attainers &gt;</a>	20	96.9	32%	0%	-2.3	+8%	-0%
Pupil Premium	<a href="#">FSM (in last 6 years) &gt;</a>	29	100.4	57%	0%	-3.1 ↓	+2%	-5%
	<a href="#">Not FSM (in last 6 years) &gt;</a>	31	106.4 ↑	77% ↑	16%	+2.0 ↑	+11%	+5%
FSM	<a href="#">FSM &gt;</a>	17	99.8	53%	0%	-3.1 ↓	-1%	-4%
	<a href="#">Not FSM &gt;</a>	43	105.1 ↑	74% ↑	12%	+0.4 ↑	+10%	+1%
FSM Ever	<a href="#">FSM (ever) &gt;</a>	29	100.4	57%	0%	-3.1 ↓	+2%	-5%
	<a href="#">Not FSM (ever) &gt;</a>	31	106.4 ↑	77% ↑	16%	+2.0 ↑	+11%	+5%
Term of Birth	<a href="#">Autumn Term &gt;</a>	22	106.0	73%	14%	-0.3	+1%	+0%
	<a href="#">Spring Term &gt;</a>	20	102.1	55%	10%	-1.5	+3%	+1%
	<a href="#">Summer Term &gt;</a>	18	102.2	76% ↑	0%	-0.2	+17%	-2%
SEN Group	<a href="#">SEN Support &gt;</a>	10	95.3	33%	0%	-5.6 ↓	-12%	-2%
	<a href="#">EHC Plan &gt;</a>	2	100.0	0%	0%	-10.5	-15%	-0%
	<a href="#">No SEN &gt;</a>	48	105.4 ↑	77% ↑	10%	+0.9 ↑	+11%	+0%
EAL	<a href="#">First language not English &gt;</a>	13	103.3	62%	15%	+2.4	+9%	+20% ↑
	<a href="#">First language English &gt;</a>	47	103.7 ↑	70% ↑	7%	-1.2 ↑	+6%	-4%
Mobility	<a href="#">Joined in Y5 or Y6 &gt;</a>	2	105.5	100%	0%	+7.9	+60%	-1%
	<a href="#">Joined before Y5 &gt;</a>	58	103.5 ↑	67% ↑	9%	-1.0 ↑	+4%	-0%
Ethnicity	<a href="#">White &gt;</a>	56	103.4 ↑	67% ↑	7%	-1.2 ↑	+5%	-2%
	<a href="#">Chinese &gt;</a>	1	120.0	100%	100%	+9.5	+4%	+77%
	<a href="#">Any Other &gt;</a>	3	102.2	67%	0%	+7.4	+54%	-3%



# Subjects

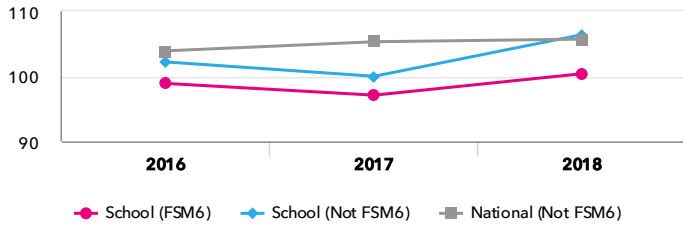
## KS2 subject performance 2018

	Actual results			Pupil progress			Actual results over time
	2016	2017	2018	2016	2017	2018	
Number of Pupils / % Matched	59	62	60	86%	90%	92%	
<b>Reading</b>							
% Expected standard+	54%	48% <span style="color:red">⬇</span>	73% <span style="color:green">⬆</span>	-10%	-19% <span style="color:red">⬇</span>	+1% <span style="color:green">⬆</span>	<b>% Expected standard+ Reading</b>
% Higher standard	8% <span style="color:red">⬇</span>	6% <span style="color:red">⬇</span>	17%	-12% <span style="color:red">⬇</span>	-17% <span style="color:red">⬇</span>	-8%	
Scaled Score	101	98 <span style="color:red">⬇</span>	103 <span style="color:green">⬆</span>	-1.9 <span style="color:red">⬇</span>	-5.3 <span style="color:red">⬇</span>	-1.6 <span style="color:green">⬆</span>	
Level 4+	-	-	-	-	-	-	
Level 4B+	-	-	-	-	-	-	
Level 5+	-	-	-	-	-	-	
Average Point Score	-	-	-	-	-	-	
<b>Writing</b>							
% Expected standard+	75%	68%	78%	+2%	-4%	+3%	<b>% Expected standard+ Writing</b>
% Higher standard	12%	5% <span style="color:red">⬇</span>	10%	-3%	-12% <span style="color:red">⬇</span>	-8%	
Scaled Score	101	100	101	+0.3	-0.9	-0.5	
Level 4+	-	-	-	-	-	-	
Level 5+	-	-	-	-	-	-	
Average Point Score	-	-	-	-	-	-	
<b>Maths</b>							
% Expected standard+	59%	66%	78%	-8%	-4%	+5%	<b>% Expected standard+ Maths</b>
% Higher standard	8%	13%	28% <span style="color:green">⬆</span>	-10%	-7%	+5%	
Scaled Score	101 <span style="color:red">⬇</span>	101 <span style="color:red">⬇</span>	104 <span style="color:green">⬆</span>	-2.2 <span style="color:red">⬇</span>	-2.1 <span style="color:red">⬇</span>	+0.4 <span style="color:green">⬆</span>	
Level 4+	-	-	-	-	-	-	
Level 4B+	-	-	-	-	-	-	
Level 5+	-	-	-	-	-	-	
Average Point Score	-	-	-	-	-	-	
<b>Grammar, Punctuation &amp; Spelling</b>							
% Expected standard+	69%	50% <span style="color:red">⬇</span>	77% <span style="color:green">⬆</span>	-1%	-23% <span style="color:red">⬇</span>	+3% <span style="color:green">⬆</span>	<b>% Expected standard+ Grammar, Punctuation &amp; Spelling</b>
% Higher standard	19%	15% <span style="color:red">⬇</span>	20% <span style="color:red">⬇</span>	-5%	-15% <span style="color:red">⬇</span>	-14% <span style="color:red">⬇</span>	
Scaled Score	103	100 <span style="color:red">⬇</span>	104 <span style="color:red">⬆</span>	-1.1	-4.8 <span style="color:red">⬇</span>	-2.3 <span style="color:red">⬆</span>	
<b>Science</b>							
% Expected standard+	83%	60% <span style="color:red">⬇</span>	78% <span style="color:green">⬆</span>	-	-	-	<b>% Expected standard+ Science</b>
Level 4+	-	-	-	-	-	-	
Level 5+	-	-	-	-	-	-	
Average Point Score	-	-	-	-	-	-	

# Disadvantaged pupils

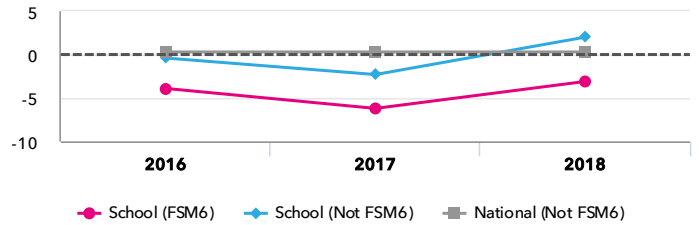
## KS2 attainment for disadvantaged pupils 2018

Average Scaled Score (Re, Ma)



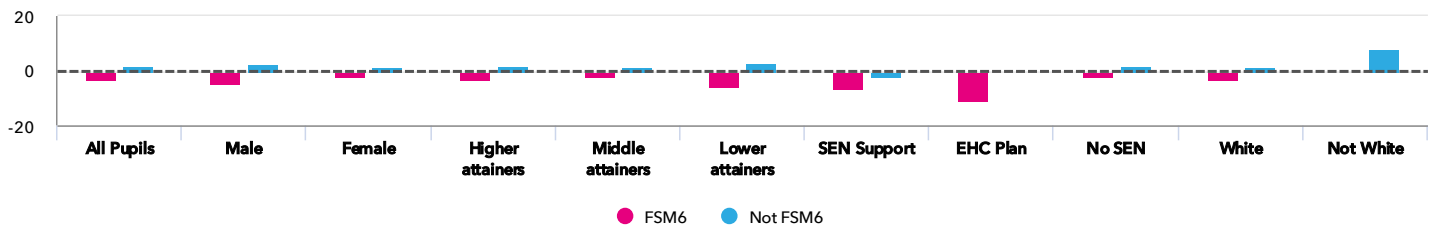
## KS2 progress for disadvantaged pupils 2018

Average Scaled Score (Re, Ma)



## Progress gap

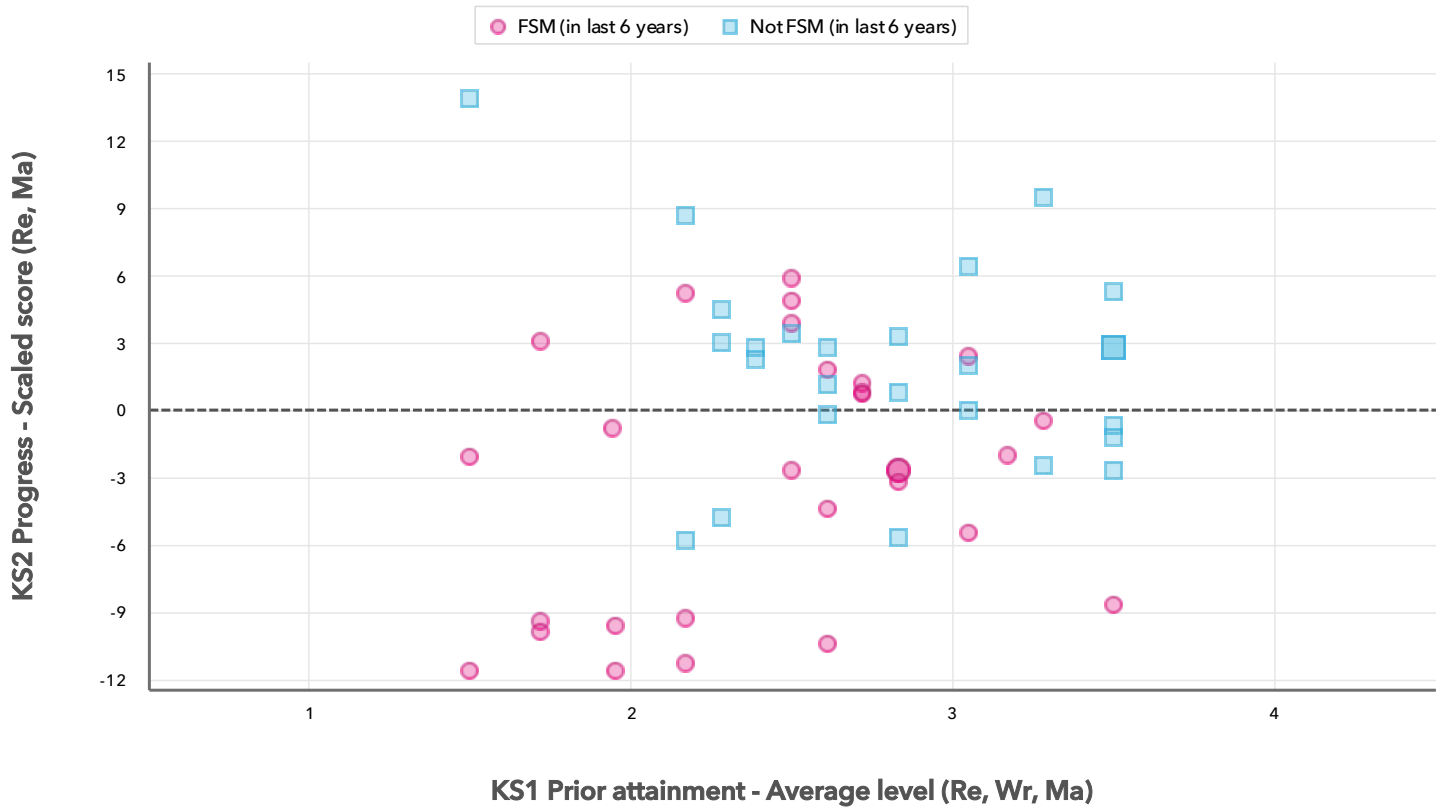
Average Scaled Score (Re, Ma)



## Attainment & progress

Pupils		Attainment			Progress				
		FSM6	Not FSM6	Gap	FSM6	Not FSM6	Gap		
Summary	All Pupils	29	31	100.4	106.4 ↑	-6	-3.1 ⬇	2 ↑	-5.1
Gender	Male	14	17	98.3	107.8	-9.5	-4.9	2.3	-7.2
	Female	15	14	102.6	104.8	-2.2	-1.3	1.3	-2.6
Prior Attainment	Higher attainers	5	12	106.7	112.4	-5.7	-2.9	1.9	-4.8
	Middle attainers	12	6	104.4	105.7	-1.3	-0.3	0.8	-1.1
	Lower attainers	12	8	93.3	102	-8.7	-5.8	3.1	-8.9
SEN Group	SEN Support	9	1	94.2	104.5	-10.3	-6.2	-0.2	-6
	EHC Plan	2	-	100	-	-	-10.5	-	-
	No SEN	18	30	103.6	106.5	-2.9	-0.7	2.1	-2.8
Ethnic Group	White	29	27	100.4	106.4	-6	-3.1	1.2	-4.3
	Not White	-	4	-	106.6	-	-	8.1	-

KS2 Pupil scatterplot 2018 60 pupils highlighted by Pupil Premium



## Context

## Context · Year 6 · 2017 / 2018

		Pupils	Proportion	
			School	National
Summary	All Pupils	63	100%	100%
Gender	Male	32	51%	51%
	Female	31	49%	49%
Prior Attainment	Higher attainers	17	27%	31%
	Middle attainers	20	32%	35%
	Lower attainers	21	33%	29%
Pupil Premium	FSM (in last 6 years)	32	51%	30%
	Not FSM (in last 6 years)	31	49%	69%
FSM	FSM	20	32%	15%
	Not FSM	43	68%	85%
FSM Ever	FSM (ever)	32	51%	31%
	Not FSM (ever)	31	49%	69%
Term of Birth	Autumn Term	23	37%	33%
	Spring Term	22	35%	32%
	Summer Term	18	29%	35%
SEN Group	SEN Support	10	16%	15%
	EHC Plan	2	3%	3%
	No SEN	51	81%	82%
EAL	First language not English	13	21%	20%
	First language English	50	79%	80%
Mobility	Joined in Y5 or Y6	3	5%	7%
	Joined before Y5	60	95%	93%
Ethnicity	White	59	94%	74%
	Chinese	1	2%	0%
	Any Other	3	5%	4%

## Absence · Year 6 · 2017 / 2018

		Pupils	Absence		Persistent absentees	
			School	National	School	National
Summary	All Pupils	63	5%	4%	13%	5%
Gender	Male	32	5%	4%	9%	6%
	Female	31	6%	4%	16%	5%
Prior Attainment	Higher attainers	17	4%	3%	6%	2%
	Middle attainers	20	5%	4%	15%	4%
	Lower attainers	21	6%	5%	14%	10%
Pupil Premium	FSM (in last 6 years)	32	7%	5%	22%	12%
	Not FSM (in last 6 years)	31	4%	3%	3%	3%
FSM	FSM	20	7%	6%	25%	16%
	Not FSM	43	4%	4%	7%	4%
FSM Ever	FSM (ever)	32	7%	5%	22%	11%
	Not FSM (ever)	31	4%	3%	3%	3%
Term of Birth	Autumn Term	23	5%	4%	13%	6%
	Spring Term	22	5%	4%	5%	6%
	Summer Term	18	5%	4%	22%	5%
SEN Group	SEN Support	10	6%	5%	10%	10%
	EHC Plan	2	10%	7%	50%	20%
	No SEN	51	5%	4%	12%	4%
EAL	First language not English	13	4%	4%	8%	5%
	First language English	50	5%	4%	14%	6%
Mobility	Joined in Y5 or Y6	3	12%	6%	33%	15%
	Joined before Y5	60	5%	4%	12%	5%
Ethnicity	White	59	5%	4%	14%	6%
	Chinese	1	3%	2%	0%	1%
	Any Other	3	5%	4%	0%	6%